



****AVAILABLE IMMEDIATELY** **MODERN FIRST FLOOR APARTMENT****
****FURNISHED** **WIFI & TV LICENCE INCLUDED**** A very well presented, purpose built first floor apartment in the heart of Jesmond Park East. Found in the Wyncote Court development, this stylish property is modern and well presented with spacious rooms throughout. A great property for a professional couple or professional sharers!

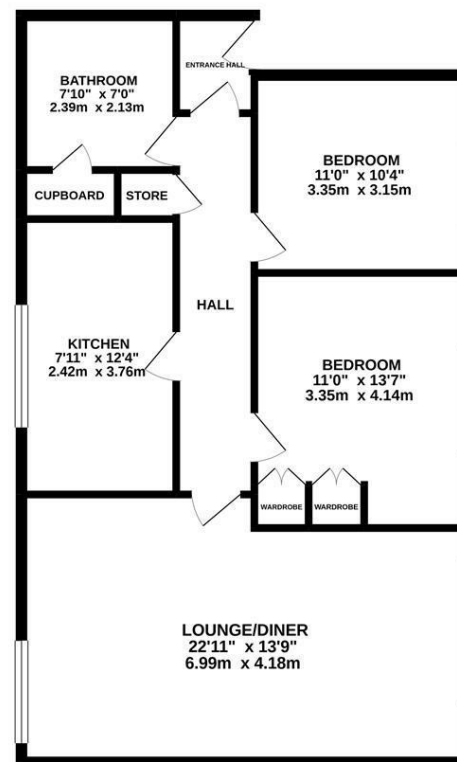


FIRST FLOOR
 843 sq.ft. (78.3 sq.m.) approx.

The property briefly comprises a communal entrance hallway with stairs access to the first floor. The apartment itself has an entrance porch leading to entrance hall; two double bedrooms, the master of which with fitted wardrobes; modern kitchen with appliances including a slimline dishwasher, fridge freezer, washing machine & tumble dryer; stylish family bathroom WC with storage cupboard; impressive 22ft lounge/ diner with pleasant leafy dual aspect views. Externally there are well kept communal gardens surrounding the development, as well as off street residents parking spaces.

Available on a furnished basis, ideal for a professional couple or sharers alike.

Available Immediately | £1,200pcm | Furnished | First Floor Apartment | Purpose Built Development | 843 Sq ft (78.3 m2) | 22ft Lounge/Diner | Modern Fitted Kitchen | Two Bedrooms | Bathroom WC | Communal Gardens | Great Location | Off Street Residents Parking | Electric Heating | DG | Council Tax Band: C | EPC Rating: D



£1,200 PCM

IMPORTANT NOTE: These particulars and the descriptions and measurements herein do not constitute representation and whilst every effort has been made to ensure accuracy, this cannot be guaranteed.

TOTAL FLOOR AREA: 843 sq.ft. (78.3 sq.m.) approx.
 Whilst every attempt has been made to ensure the accuracy of the floorplan contained herein, measurements of doors, windows, rooms and any other items are approximate and no responsibility is taken for any error, omission or mis-statement. This plan is for illustrative purposes only and should be used as such by any prospective purchaser. The services, systems and appliances shown have not been tested and no guarantee as to their operability or efficiency can be given.
 Made with Metreapp ©2020

